

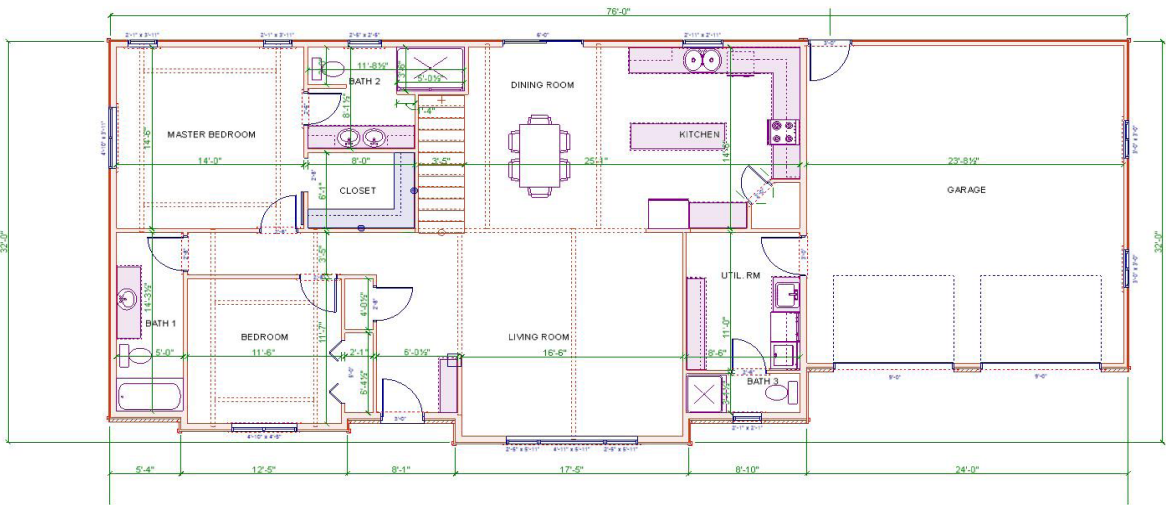
# THIS HOME AT AUCTION

SATURDAY, JUNE 7 AT 10:00 AM



## SEE FOR YOURSELF AT AN OPEN HOUSE

Two public open houses will be held from 7:00 - 9:00 pm on Tuesday, May 27 and Thursday, May 29



DESIGNED AND BUILT BY NORTHEAST STUDENTS



For more information or to schedule a tour, call  
402-844-7215 or 800-348-9033 ext. 7215.  
**VISIT [NORTHEAST.EDU](http://NORTHEAST.EDU)**

### SPECIAL FEATURES IN THIS OPEN FLOOR PLAN INCLUDE:

- Pre-painted LP smart siding
- Asphalt shingles
- R-21 sidewalls and R-49 attic cellulose insulation
- Coffered and vaulted ceilings
- Granite kitchen countertops
- Ferche' oak millwork stained to match the built-in custom cabinetry
- Pella casement windows
- 2 bedroom, 2 full bath, 1 3/4 bath

*Floor coverings are the responsibility of the homeowner. Home is designed to be moved at buyer's expense to own lot. House includes all water, vent and waste lines extended to floor joist level for ease of hook-up. 2x6 exterior stud walls with cellulose insulation throughout. House meets or exceeds local and state building codes. All electrical conveniences installed in accordance with national electric and FHA code; circuits tested and connected to a 200 amp breaker panel. Northeast does not discriminate based upon any status protected by law or college policy. Please go to [northeast.edu/nondiscrimination](http://northeast.edu/nondiscrimination) for details.*



# THIS HOME AT AUCTION

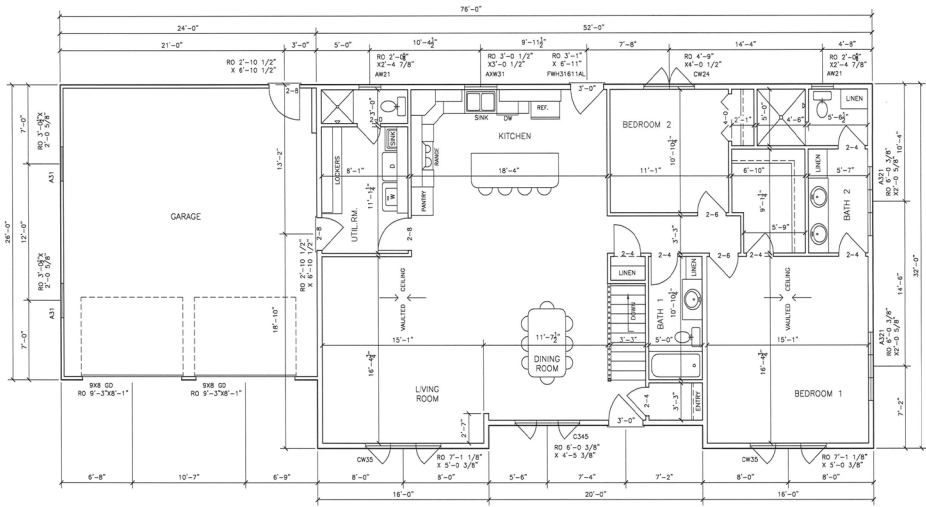
## SATURDAY, JUNE 7 AT 10:00 AM

HOUSE #120034 | 1616 SQ FT



### SEE FOR YOURSELF AT AN OPEN HOUSE

Two public open houses will be held from 7:00 - 9:00 pm on Tuesday, May 27 and Thursday, May 29



DESIGNED AND BUILT BY NORTHEAST STUDENTS



For more information or to schedule a tour, call  
402-844-7215 or 800-348-9033 ext. 7215.

VISIT [NORTHEAST.EDU](http://NORTHEAST.EDU)

#### SPECIAL FEATURES IN THIS OPEN FLOOR PLAN INCLUDE:

- Pre-painted LP smart siding
- Asphalt shingles
- R-21 sidewalls and R-49 attic cellulose insulation
- Coffered and vaulted ceilings
- Granite kitchen countertops
- Ferche' oak millwork stained to match the built-in custom cabinetry
- Andersen 400 series casement windows
- 2 bedroom, 2 full bath and 1 3/4 bath

Floor coverings are the responsibility of the homeowner. Home is designed to be moved at buyer's expense to own lot. House includes all water, vent and waste lines extended to floor joist level for ease of hook-up. 2x6 exterior stud walls with cellulose insulation throughout. House meets or exceeds local and state building codes. All electrical conveniences installed in accordance with national electric and FHA code; circuits tested and connected to a 200 amp breaker panel. Northeast does not discriminate based upon any status protected by law or college policy. Please go to [northeast.edu/nondiscrimination](http://northeast.edu/nondiscrimination) for details.